

R-VISION® TRAIL-LITE SPORT "ULTRA-LITE" TRAVEL TRAILERS

# TRAIL-LITE SPORT



R-VISION® TRAIL-LITE SPORT "ULTRA-LITE" TRAVEL TRAILERS

» THE WORLD IN R-VISION®

## » ADVENTURE IN COMFORT

Discover the Trail-Lite Sport. Hundreds of pounds lighter than other trailers in its class, the Sport is small tow vehicle approved for fun and fuel efficiency! The six-sided aluminum framed trailer is built for the long haul. The new arched interior ceiling provides 6' 7" of headroom and a sense of spaciousness that is unmatched. Discover the Trail-Lite Sport today and hit the road for adventures ahead!

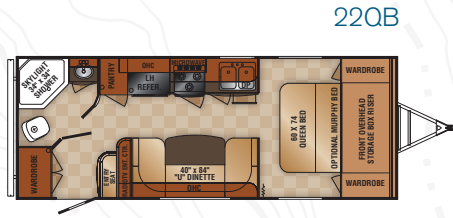
- A. 22QB Galley with Counter Extension
- B. 22QB U-Dinette and Entertainment Center with Optional TV in a Cinnamon Stick Décor
- C. 22QB with Murphy Bed Option (Daytime Position)
- D. 22QB with Murphy Bed Option (Evening Position)



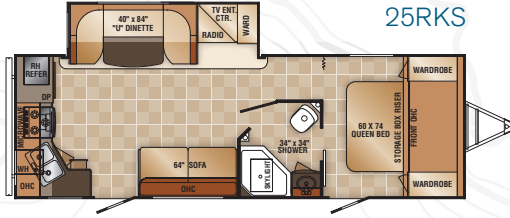


# R-VISION® » SPORT » FLOORPLANS & SPECIFICATIONS

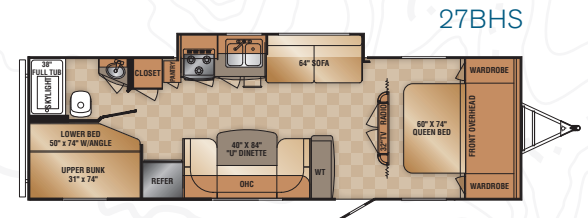
## FLOORPLANS



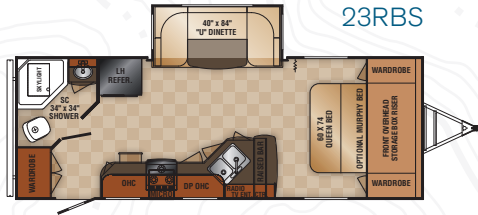
22QB



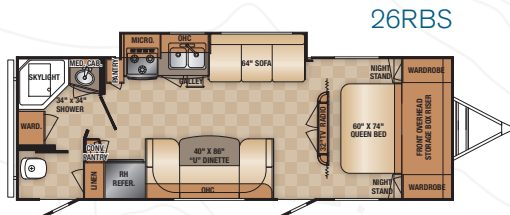
25RKS



27BHS



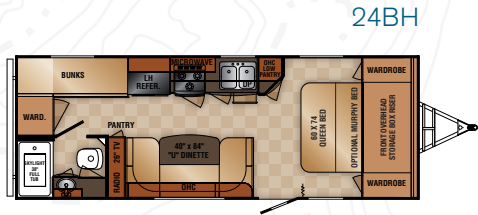
23RBS



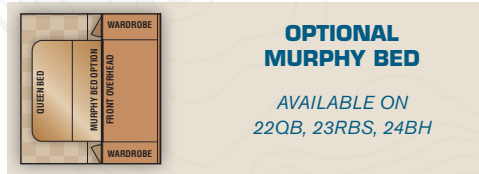
26RBS



29KBS



24BH



## SPECIFICATIONS

	22QB	23RBS	24BH	25RKS	26RBS	27BHS	29KBS
<b>WEIGHTS</b>							
GROSS VEHICLE WEIGHT RATING (LB)	6,160	6,160	6,160	6,160	6,160	6,160	6,160
DRY HITCH WEIGHT (LB) (APPR.)	365	460	420	450	440	450	500
DRY AXLE WEIGHT (APPR.)	3,310	3,880	3,340	4,290	3,900	4,180	4,400
NET CARRYING CAPACITY (LB) (NCC)	2,485	1,260	2,400	1,421	1,820	1,530	1,260
AXLE RATING	2,800 x 2	2,800 x 2	2,800 x 2	2,800 x 2	2,800 x 2	2,800 x 2	2,800 x 2
TIRE SIZE (ST205/75R14C)	14"	14"	14"	14"	14"	14"	14"
TIRE LOAD RATING (LB)	1,760	1,760	1,760	1,760	1,760	1,760	1,760
TIRE LOAD RANGE	C	C	C	C	C	C	C
<b>MEASUREMENTS</b>							
OVERALL LENGTH	25'-1"	26'-6"	26'-3"	26'-5"	28'-2"	30'-11"	33'-4"
OVERALL HEIGHT (A/C INCLUDED)	9'-8"	9'-8"	9'-8"	9'-8"	9'-8"	9'-8"	9'-8"
EXTERIOR WIDTH (W/O AWNING)	8'	8'	8'	8'	8'	8'	8'
<b>TANK CAPACITIES</b>							
GREY TANK	30 GAL.	30 GAL.	30 GAL.	60 GAL.	30 GAL.	30 GAL.	30 GAL.
BLACK TANK	30 GAL.	30 GAL.	30 GAL.	30 GAL.	30 GAL.	30 GAL.	30 GAL.
FRESH WATER CAPACITY	36 GAL.	36 GAL.	36 GAL.	36 GAL.	36 GAL.	36 GAL.	36 GAL.
L.P. TANK (TWO 20 LB. TANKS)	S	S	S	S	S	S	S

\*Weights may vary by options.

\*\* Tank manufacturer's listed water capacity (WC). Actual filled LP capacity is 80% of listing due to safety shut off required on tank.

# STANDARD FEATURES

## BODY CONSTRUCTION

- » 6" I-Beam Chassis w/Steel Outriggers
- » 96" Width Construction
- » 14" Tires w/Steel Rims
- » Frame Mounted Entry Steps
- » Front Hitch Manual Crank Jack
- » 2-5/16" Ball Coupler
- » Tandem Axles
- » Gel Coat Fiberglass Exterior
- » Laminated Sidewalls, Floor & Rear Walls
- » EPDM Roofing Membrane
- » Rain Gutters w/Downspouts
- » Steel Bumper
- » A-Frame Battery Rack
- » Pass Through Front Storage
- » Entry Assist Entry Door Handle
- » Tinted Windows
- » Vinyl Graphics
- » Stamped Steel Roof Truss
- » Arched Roof Design
- » Ducted Roof Plenum
- » Fiberglass 1/4 Front Cap-Brown
- » Radius Front Profile
- » Black Exterior Trim

## SLIDE-OUT CONSTRUCTION

(Where Applicable)

- » Aluminum Welded Frame (Excluding Floor)
- » Laminated Roof and End Walls
- » Electric Cable Pulley System
- » Decorative Slide-out Fascia

## APPLIANCES & ACCESSORIES

- » Single Door 5 Cu. Ft. Refrigerator
- » Black Panel Refer Insert
- » 3-Burner Cooktop
- » Powered Range-Hood w/Light
- » 6 Gallon Gas Water Heater
- » Water Heater Bypass On-Demand High Flow Water Pump

- » Systems Monitor Panel
- » 18M or 20M BTU Electronic Ignition Furnace

## INTERIOR

- » Solid Hardwood Cabinet Doors and Drawers w/Glazing
- » Radius Design Overhead Cabinet Ends
- » "Lite Ply" Undercap
- » Accent Wall Board (Slide-outs & Front Wall)
- » Linoleum
- » Mini-Blinds
- » Window Valances
- » Lambrequin Legs
- » Bed Storage w/Prop Rod
- » Medicine Cabinet
- » Booth or U-Shaped Dinette (By Floorplan)
- » Curtains at Bunk Windows
- » Hard Valance w/Drapes at Bedroom Windows
- » Jackknife Sofa
- » Queen Bed
- » Bunk Mats (By Floorplan)
- » 12V Vent in Bathroom
- » Manual Vent - Bedroom
- » HPL Countertops w/Bullnose
- » Tub or Shower Curtain
- » Hi-Rise Goose Neck Faucet
- » Welded Aluminum Bed Base

## ELECTRICAL & PLUMBING SYSTEMS

- » 30 AMP Power Cord
- » 55 AMP Converter w/Charger
- » 120 Volt Breaker Panel
- » Porch Light
- » Hitch Light
- » 120V Exterior Recept
- » 120V GFI Outlets
- » Pex Plumbing System
- » Rotocast Holding & Fresh Tanks
- » Foot Flush Toilet

- » Centralized and Extended Dump Valves
- » Gravity Fill

## SAFETY STANDARD FEATURES

- » Fire Extinguisher
- » 120V GFI Outlets (Kitchen, Bath, Exterior)
- » Breakaway Switch
- » Safety Chains
- » LP Gas Detector
- » Smoke Detector
- » CO Detector
- » Egress Window(s)

## SPORT CONVENIENCE PACKAGE ITEMS

- » 6 Sided Aluminum Framing
- » Radial Tires
- » EZ-Lube Hubs
- » Molded ABS Fender Skirts
- » Radius Entry Door, Dead Bolt & Screen Door
- » Dual 20lb LP Bottles
- » LP Bottle Cover
- » LP "Quick Connect" Port
- » X- Wide Luggage Doors (front)
- » Diamond Plate Front Radius Cover
- » Safety Glass Windows
- » Oversized Dinette Window
- » Radius Dark Tinted Windows
- » Detachable 30 AMP Power Cord w/Indicator Light
- » Ext. Storage Light
- » Ext. Utility Light
- » Cabinet Frames - Lumber Core Stiles Pocket Drilled & Screwed
- » Ball Bearing Stainless Steel Drawer Glides
- » 7 Ply Cabinet Grade Drawer Boxes
- » "Lite Ply" Furniture Bases (Bed, Dinette, Bunks)
- » Skylight in Bathroom
- » Bath Accessories
- » Double Door 6 Cu. Ft. Refrigerator
- » Ducted Heat (where applicable)

# GENERAL OPTIONS

## SPORT CONVENIENCE PACKAGE (Mandatory Option)

### SPORT VALUE PACKAGE (Mandatory Option)

- » 13.5K BTU AC Ducted
- » Patio Awning
- » Stabilizer Jacks (4)
- » Enclosed & Protected Underbelly
- » Oven w/3 Burner Range
- » Microwave Oven
- » AM/FM/CD/DVD/iPod MP3 Stereo
- » Interior Speakers
- » Exterior Speakers
- » Radio Antenna
- » TV Antenna w/ Cable
- » Tub or Shower Surround

## BODY CONSTRUCTION

- » Sand Stone Exterior (Mandatory)
- » Aluminum Wheels (4)
- » Spare Tire w/Cover
- » Electric Tongue Jack
- » Equa-Flex Tandem Axle
- » Roof Ladder
- » Double Entry Step

## APPLIANCES & ACCESSORIES

- » Sink Cover (1)
- » Stove Cover (Bi-Fold)
- » 26" LED TV (22QB, 23RBS, 24BH, 25RKS)
- » 32" LED TV (26RBS, 27BHS, 29KBS)
- » RVQ Grill w/Stand

## FURNITURE

- » Murphy Bed w/Sofa (22QB, 23RBS, 24BH)

## PLUMBING & BATH

- » 6 Gal. G/E DSI 110 Water Heater
- » Acrylic Shower/Tub Door
- » Glass Shower Door (Mandatory 22QB, 23RBS, 25RKS, 26RBS)
- » Outside Shower

## WINDOWS, DOORS & AWNINGS

- » Night Shades
- » Electric Patio Awning IPO Manual Awning

## HEATING, VENTS & AIR CONDITIONING

- » Fantastic Attic Fan
- » 15.0M BTU A/C IPO 13.5M BTU A/C

## CANADIAN RV SHIPMENTS

- » Transport Canada MVS/R
- » Canadian RV Certification

R-VISION® 800 » 650 » 7337  
www.rvisiontowables.com

YOUR LOCAL DEALER:

The actual overall length of the recreational vehicle may differ from that indicated in the brochure due to variances in the manufacturing process and/or installed components. The actual length may be greater or less than that indicated. Due to the large variety of options and floorplan arrangements available to our customers, actual weights for each unit can differ significantly. R-Vision® provides a weight sticker on each unit we produce which includes that unit's tank capacities and approximate weight. Consult your local dealer for unit availability and further information. The information printed in this brochure reflects product design, fabrication, and component parts at the date of printing. The manufacturer reserves the right, at any time, to make changes in product design or material or component specifications as its sole option, without notice. This includes the substitution of components of a different brand or trade name which will result in comparable performance. All information printed in this brochure is subject to change after the date of printing. Some features shown or mentioned in this brochure are optional and may only be available in selected floorplans. Photographs may show props or decorations that are not standard equipment. Monaco Coach, Holiday Rambler, R-Vision®, their logos & designs, are registered trademarks. Other products and company names are trademarks and/or registered trademarks of their respective holders. While the interior fabrics depicted in this sales brochure are fair and reasonable depictions, the colors depicted may not be an exact match of the actual colors because of the variances in photo-processing and printing. Due to product improvements, changes during the model year and/or transcription errors that may occur, information represented within this brochure may not be accurate at the time of your purchase. If certain information is significant to your purchasing decision, please confirm the information with your dealer. Component part and appliance manufacturers issue limited warranties covering portions of the recreational vehicle not covered under the Limited Warranties issued by R-Vision. To learn specific details regarding warranty coverage, please contact your selling dealership or review the warranty packet inside the recreational vehicle.